

CZL605E

[Date : 2010-02-14] Source : DONGGUAN SOUTH CHINA SEA ELECTRONIC CO.,LTD Read : 2869times



Rated load (kg): 0.3、 1.5、 3、 12

Main features: The product is made of alloy aluminum. It is hermetically sealed with glue to IP65, surface anodized and anti-corrosion, integral structure and easy installation. The product is suit for electronic top scale, floor scale and other weighing equipment.

Parameters:

Precision : C2

Comprehensive error(%F.S) : ± 0.02

Rated output(mv/v) : 2.0 ± 0.1

Creep(%F.S/30min) : ± 0.02

Zero balance(%F.S) : ± 1.0

Input resistance(Ω) : 405 ± 10

Output resistance(Ω) : 350 ± 3

Insulation resistance(M Ω) : $\geq 5000(100VDC)$

Temp. effect on span(%F.S/10°C) : ± 0.02

Temp. effect on zero(%F.S/10°C) : ± 0.03

Compensated temp. range(°C) : $-10 \sim +40$

Use temp. range(°C) : $-20 \sim +60$

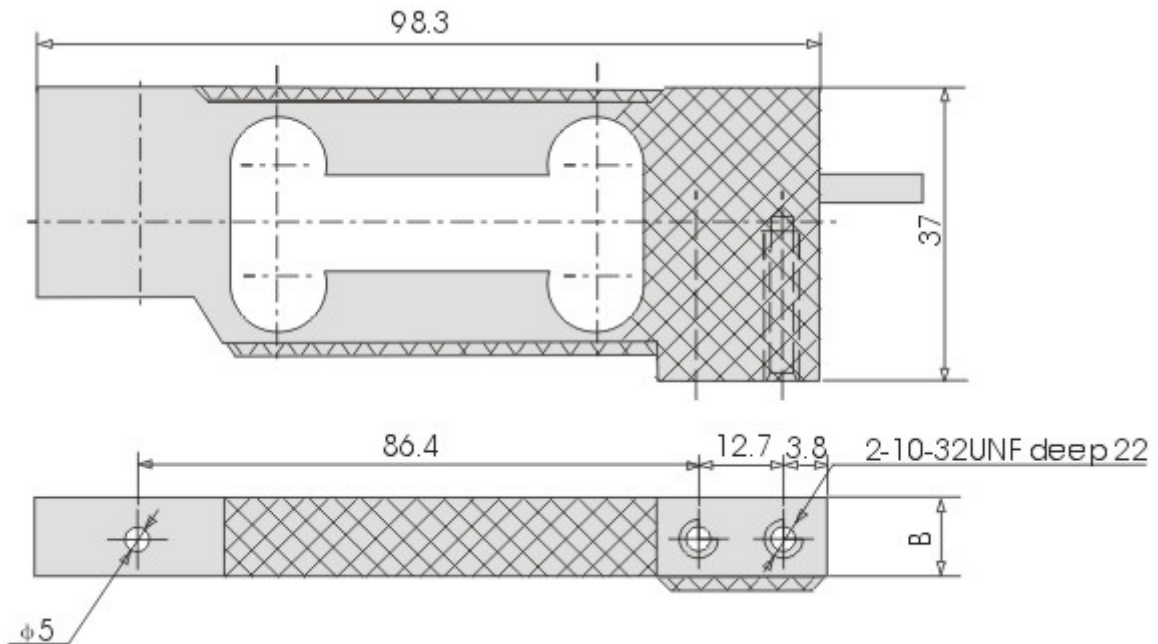
Excitation voltage(V) : $9 \sim 12(DC)$

Safe overload (%F.S) : 120

Ultimate overload (%F.S) : 150

Defend grade : IP65

Installation size (mm):



Wiring schematic diagram:

Red: Input (+) White: Output (-)

Black: Input (-) Green: Output (+)

Notes : It used 4-core shielded cable($\phi 5 \times 3000\text{mm}$)

Load instruction:

