

"HCW" / Washer type for Rolling mill & Forging press machine

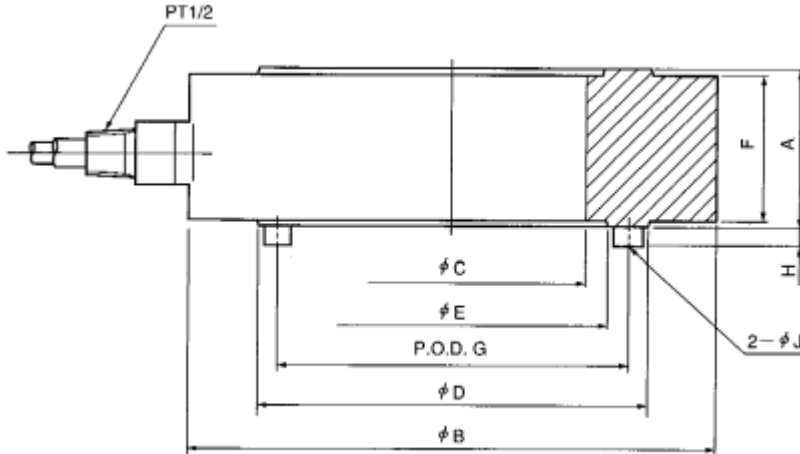


Features

- Custom made Models in accordance with requirements on capacities, dimensions. and so on.
- Welded or sealed construction can be selected in accordance with environments where this Model may be installed.
- Range of offerable capacities: 1MN to 20MN.
- Applications: For large size rolling mills and forging press machines.
- Accuracy class: 1%.

Related products : [HCWB...](#)

Appearance Dimensions



Model and Capacity / Dimension / etc. (unit : mm)

Model	Capacity	A	B	C	D	E	F	G	H	J	Natural frequency	Weight
HCW-1MN	1MN	64	241	152	186.6	164.6	62	177	10	10	21.9kHz	8kg
HCW-2MN	2MN	70	355	230	295	265	68	280	10	10	19.0kHz	24kg
HCW-5MN	5MN	70	355	230	316	240	68	280	10	20	27.3kHz	24kg

- * Items are produced only on order placed.
- * The sizes given in the above list are the standard sizes of the capacities of Model HCW SHOWA is typically producing. It is necessary to determine internal and external diameters, status of cable drawn out positions and so on according to the purpose or conditions of detection of the rolling mill on which Model HCW is to be installed. Contact regional sales offices for further details if any.

Specifications

Safe Overload	150%RC
Rated Output	1mV/V±1%
Nonlinearity	1%RO
Hysteresis	1%RO
Repeatability	0.3%RO
Excitation Voltage	12V (or less)
Safe Excitation Voltage	20V
Input Resistance	350Ω
Output Resistance	350Ω
Compensated Temp.Range	-10 to 60°C
Safe Temp.Range	-30 to 80°C
Temp.Effect on Zero	0.01%RO/°C
Temp.Effect on Output	0.01%/°C
Cable	Φ8mm-4wire shielded cable, length : 10m