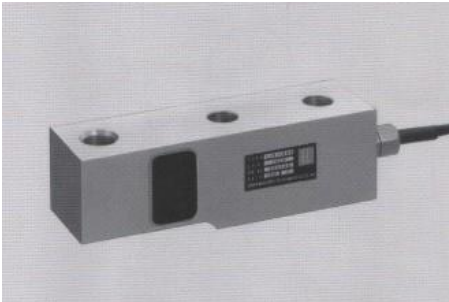


"LSM" / Beam type

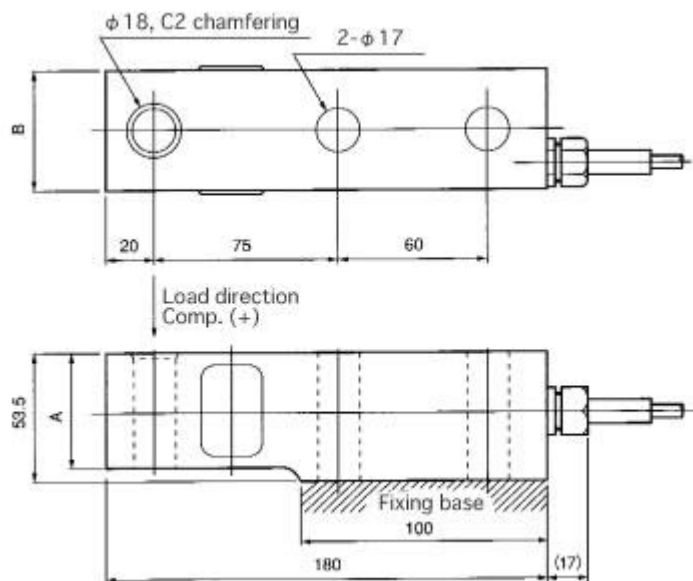


Features

- High accuracy. High output. For versatile applications.
- Large capacity load beam type insuring easy installation.
- Insuring highly stable features on account of having been subjected to a special humidity-proof treatment.
- All aluminium construction. Low cost.
- Main applications: For testing machines, industrial machines, scales, etc.
- Accuracy class: 0.05%.

Related products : LSS...

Appearance Dimensions



Model and Capacity / Dimension / etc. (unit : mm)

Model	Capacity	A	B	Natural frequency	Weight
LSM-5KN	5kN	37	45	1.3kHz	1.1kg
LSM-10KN	10kN	48	50	1.6kHz	1.3kg
LSM-20KN	20kN	51	50	2.0kHz	1.4kg

- * Confirmation to undescribed items to be made with reference to descriptions on instruction manuals or directly to this Company.
- * Items are produced only on order placed.

Specifications

Safe Overload	150%RC
Rated Output	2mV/V±1%
Nonlinearity	0.05%RO
Hysteresis	0.05%RO
Repeatability	0.03%RO
Excitation Voltage	12V (or less)
Safe Excitation Voltage	20V
Input Resistance	350Ω
Output Resistance	350Ω
Compensated Temp.Range	-10 to 60°C
Safe Temp.Range	-30 to 80°C
Temp.Effect on Zero	0.005%RO/°C
Temp.Effect on Output	0.005%/°C
Cable	Φ6mm-4wire shielded cable, length : 5m