

ENCARDIO RITE



COMPRESSION LOAD CELL

Model ELC-210S

INTRODUCTION

The Encardio-rite model ELC-210S is a heavy duty precision load cell, specially designed to meet the increasing demand in load measurement with a high degree of accuracy and reliability. The load cell is ideally suited for measurement of compressive load or forces in struts application.

It is available in capacities ranging from 1000 kN to 3500 kN.



CONSTRUCTION

The internal construction of the load cell is columnar. The element of the load cell is made of martensitic stainless steel. The element is hardened to give better linearity and hysteresis. The strain gage used are of foil type and are bonded to the elements using special epoxy cements which are very reliable.

OPERATING PRINCIPLE

The electron beam welded sensor utilizes precision bonded foil strain gages connected in a simple Wheatstone bridge circuit. The output is derived from imbalances in the bridge circuit as load is sensed by the sensor. Typically the bridge circuit is excited by 10 V DC to give a full scale output of around 1.5 mV/V.

Load applied to the cell can be measured by using any standard digital read-out unit suitable for resistance strain gage applications.

FEATURES

- ✦ Rugged & robust construction
- ✦ Outstanding reliability and long term stability
- ✦ Specially designed to suit harsh & severe industrial environment
- ✦ Temperature compensated
- ✦ Stable system with no moving parts and linkages
- ✦ Bridge resistance 770 ohms
- ✦ Any standard strain gage bridge measuring read-out device can be used
- ✦ Side and eccentric load effect negligible
- ✦ Hermetically sealed by electron beam welding

APPLICATIONS

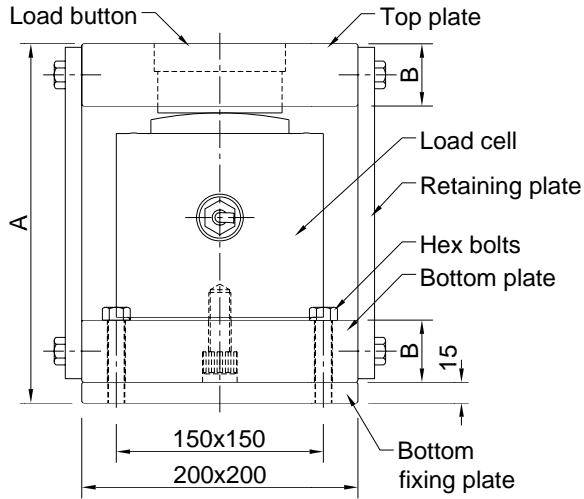
- ✦ Measurement of compressive load
- ✦ Measurement of axial forces in struts.
- ✦ Load testing in piles.
- ✦ Other such load measurement applications

EXCELLENCE IN DESIGN

Load cells have great resistance to extraneous forces. This increases the fatigue life, permits less stringent mounting alignment and reduces the possibility of reading error. The load cell is protected against dust, moisture and adverse environmental conditions.

DIMENSIONS

MOUNTING IN STRUT APPLICATIONS



Capacity kN	Compression load cell	
	A mm	B mm
1000/1500	234	32
2000/2500/3500	260	45

SPECIFICATIONS

Type	Resistive strain gage
Range (kN)	1000, 1500, 2000, 3000, 3500
Over range capacity	150 %
Non linearity	± 1 % fs
Output	1.5 mV/V ± 10 %
Excitation	10 V DC (max. 20 VDC)
Terminal resistance	
Input	770 Ohm ± 5 %
Output	700 Ohm ± 1 %
Temperature limit	-20 to 80°C
Cable connection	Four core shielded 2m long/or as specified
Required accessories	Portable read-out unit/ Logger

**All specifications subject to change without prior notice.*

ORDERING INFORMATION

Model **ELC-210S- X**

Capacity kN _____

ENCARDIO-RITE ELECTRONICS PVT. LTD.

A-7 Industrial Estate, Talkatora Road, Lucknow, UP-226011, India

P +91 522 2661040, F +91 522 2662403, geotech@encardio.com

International: P +91 522 2661044, www.encardio.com

DATA SHEET 1150-12 R02