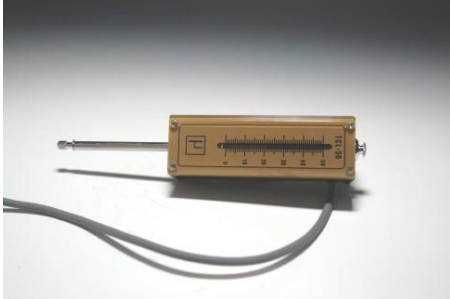


"TCLA

-A&B" / Sliding resistance type

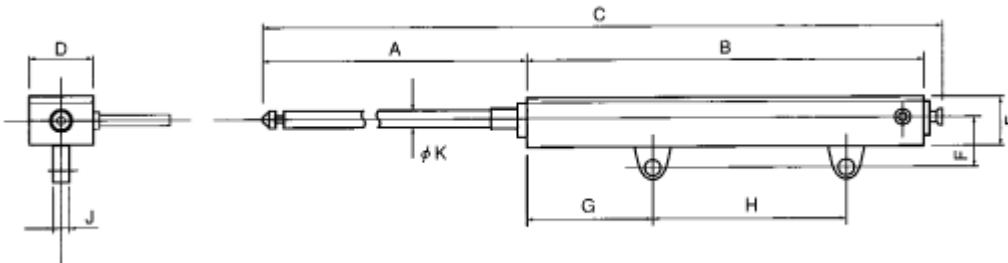


Features

- Simple reading with the ruler graduations provided.
- High accuracy because of slide resistor system employed.
- Using special noiseless contact in the device.
- Accuracy class: 0.2% RO.

Related products : [Dial-gage](#) / [Small Cantilever](#) / [Long stroke](#) / [Inductance "L"](#) / [Inductance "LR"...](#)

Appearance Dimensions



Model and Capacity / Dimension / etc. (unit : mm)

Model	Capacity	A	B	C	D	E	F	G	H	J	K	Reaction force(N):start point/ end point	Weight
TCLA- 30A	30mm	46.7	76	129.4	32	27	27	35	-	6	5	1.8/3.5	250g
TCLA-50A,B	50mm	66.7	96	169.4	32	27	27	40	-	6	5	1.9/3.5	280g
TCLA-100A,B	100mm	116.7	153	276.4	32	27	27	70	-	6	5	1.9/3.2	330g
TCLA-200A	200mm	235.5	266	510	41	30	28	80	120	6	6	3.5/8.0	630g
TCLA-300A	300mm	364	411	814	70	45	46	75	254	10	10	9.5/13.0	2.5kg

- * The weight indicated in the tables of this data sheet does not include the weight of cables.

Specifications

Rated Output	1.5mV/V±1% (A-Series) 100×10 ⁻⁶ strain / mm (B-Series)
Nonlinearity	0.2%RO
Hysteresis	0.2%RO
Repeatability	0.1%RO
Excitation Voltage	10V (or less)
Safe Excitation Voltage	12V
Input Resistance	350Ω
Output Resistance	350Ω
Compensated Temp.Range	0 to 50°C
Safe Temp.Range	0 to 60°C
Temp.Effect on Zero	0.02%RO/°C
Cable	Φ4mm-4wire shielded cable, length : 0.3m Φ6mm-4wire shielded cable, length : 0.3m
Attached connector	Jack / PRC03-32A10-7F

Remarks:

No relay cable is provided in this displacement detector. Utilize any of relay cables (with however connector of NDIS Standard) already in your possession or purchase from us separately a recommended relay cable specifying Part No. [C-A-5...](#)