

"TP" / High-Capacity Torque Transducer (Reaction)

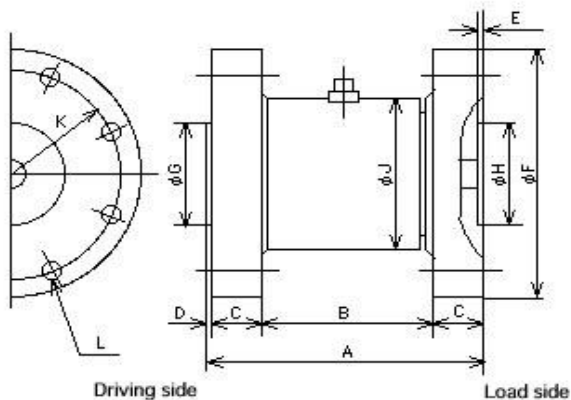


Features

- Can make measurement from static torque to dynamic torque.
- Small mechanical torsional angle (0.1 deg approx or 0.2 deg approx / 5 kN•m or larger). High accuracy.
- Wider capacity ranges (50N•m to 20kN•m).
- Applications: For material testing machines, inspection equipment, etc.
- Making custom design or manufacture of disk type torque transducer.

Related products : [Rotary](#) / [Reaction](#) / [Ultralow-Capacity](#) / [Reaction](#) / [Low-Capacity...](#)

Appearance Dimensions



Model and Capacity / Dimension / etc. (unit : mm)

Model	Capacity	A	B	C	D	E	F	G/H	J	K	L	Weight
TP-50N	50N•m	99	65	15	4	5	110	60	65	90	8-Φ9	2.9kg
TP-100N	100N•m	99	65	15	4	5	110	60	65	90	8-Φ9	2.9kg
TP-200N	200N•m	99	65	15	4	5	110	60	65	90	8-Φ9	2.9kg
TP-500N	500N•m	119	70	22.5	4	5	135	80	70	110	8-Φ14	6.2kg
TP-1kN	1kN•m	119	70	22.5	4	5	135	80	70	110	8-Φ14	6.2kg
TP-2kN*	2kN•m	154	95	27.5	4	5	185	110	89	155	8-Φ18	13kg
TP-5kN*	5kN•m	199	125	35	4	5	215	125	101	180	12-Φ18	25kg

TP-10KN*	10KN•m	239	155	40	4	5	270	160	114	230	12-Φ22	45kg
TP-20KN*	20KN•m	339	225	55	4	5	340	210	160	280	12-Φ33	97kg

- *The items with the Mark (*) are produced only on order placed.
- *The tolerated sizes of G/H will come to g6/H7 , respectively.

Specifications

Safe Overload	150% RC
Rated Output	1.0mV/V±1%
Nonlinearity	0.2%RO
Hysteresis	0.2%RO
Repeatability	0.1%RO
Excitation Voltage	12V (or less)
Safe Excitation Voltage	20V
Input Rsistance	350Ω
Output Rsistance	350Ω
Compensated Temp.Range	-10 to 60°C
Safe Temp.Range	-30 to 80°C
Temp.Effect on Zero	0.01%RO/°C
Temp.Effect on Output	0.01%RO/°C
Connector(on body)	Receptacle / PRC03-21A10-7F
Attached cable	L-A-5 (Refer to transducer connections)